

| NO. | DATE | REVISION RECORDS | REVISED | REVISION NO. |
|-----|------|------------------|---------|--------------|
| | | | | |
| | | | | |
| | | | | |

注記

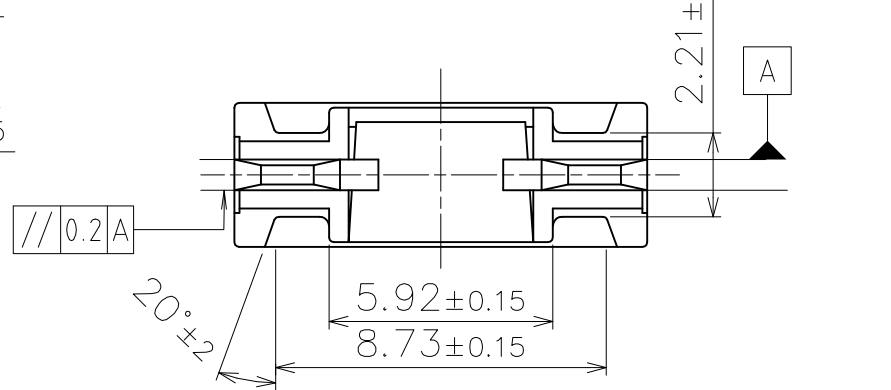
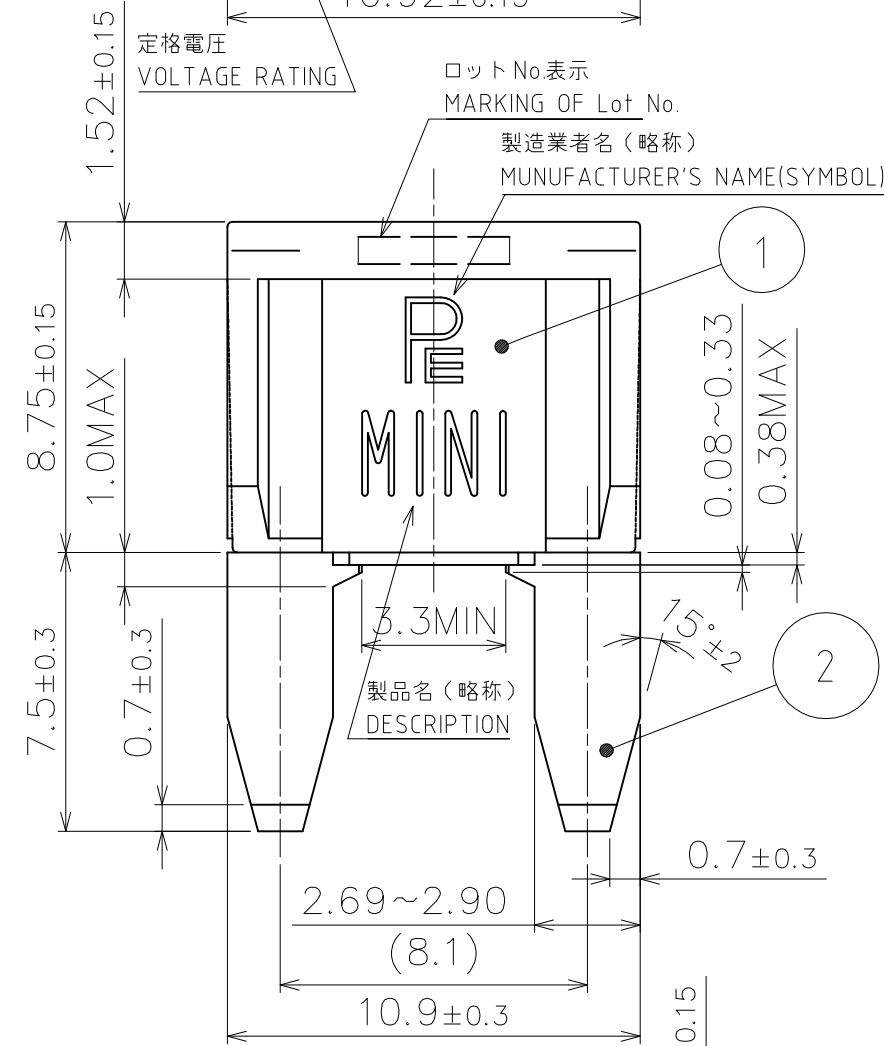
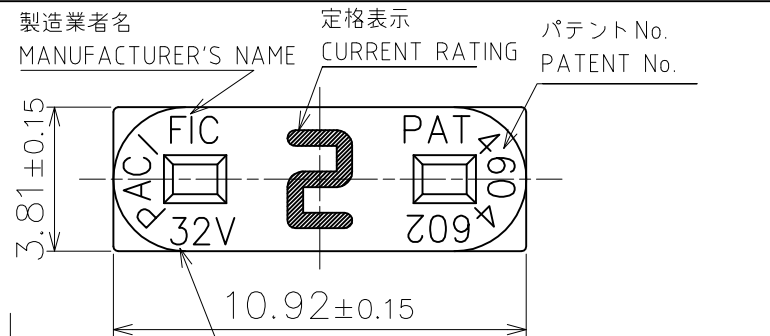
1. 定格表示は 白、ボデー色は ISO 8820-PART 3 による。全ての表示は、指示位置に対し180°回転可。
2. ヒューズエレメントは、ハウジングを通して見えること。
3. 寸法は、センターラインに対して対称とする。
4. 電気特性は ISO 8820-PART 3による。
5. 定格表示文字は ANSI X3.17-1981相当とする。
6. ハウジングの図示の位置にロットNo.を表示すること。
7. 太平洋精工規定(PES-02-04)の環境負荷物質の使用禁止、制限規定を遵守すること。

NOTE

1. CURRENT RATING MARKED IN WHITE. BODIES MOLDED IN COLORS PER ISO 8820-PART 3.
- ALL MARKING MAY BE ROTATED 180° FROM INDICATED POSITION.
2. FUSE ELEMENT IS VISIBLE THROUGH HOUSING.
3. DIMENSIONS ARE SYMMETRICAL ABOUT CENTERLINES.
4. ELECTRICAL EFFICIENCY PER ISO 8820-PART 3.
5. CURRENT RATING SHALL BE MARKED IN ACCORDANCE WITH ANSI X3.17-1981.
6. LOT NUMBER SHALL BE MARKED ON THE INDICATED LOCATION OF HOUSING.
7. COMPLY WITH ENVIRONMENTAL RESTRICTION AND PROHIBITION WHICH PRESCRIBED UNDER "PES-02-04".

| CURRENT RATING(A) | VOLT RATING | PART NO. | PACKAGING PART No. | COLOR CODE | HOUSING MATERIAL |
|-------------------|-------------|----------|--------------------|----------------|------------------|
| 2 | 32 | 12020020 | 12020021 | GRAY | POLY AMIDE |
| 3 | 32 | 12030030 | 12030031 | VIOLET | |
| 4 | 32 | 12040030 | 12040031 | PINK | |
| 5 | 32 | 12050030 | 12050031 | TAN | |
| 7.5 | 32 | 12070030 | 12070031 | BROWN | |
| 10 | 32 | 12100030 | 12100031 | RED | |
| 15 | 32 | 12150030 | 12150031 | BLUE | |
| 20 | 32 | 12200030 | 12200031 | YELLOW | |
| 25 | 32 | 12250020 | 12250021 | NATURAL(WHITE) | |
| 30 | 32 | 12300020 | 12300021 | GREEN | |

| 2 | — | ELEMENT | 1 | ZINC ALLOY | Ag PLATING | |
|--|--------------------|---------------------|-----------|------------------------|--------------------|---------|
| 1 | — | HOUSING | 1 | SEE TABLE | | |
| NO. | PART NO. | PART NAME | Q'TY | MATERIAL | SIZE | REMARKS |
| APPROVED | <i>Sumasaki</i> | DIMENSION TOLERANCE | | ANGULAR TOLERANCE | FINISH | |
| CHECKED | <i>ml</i> | — | | — | — | |
| DESIGNED | <i>Daiji Honda</i> | RUST PREVENTION | | MATERIAL | | |
| DRAWN | <i>M. Sumasaki</i> | — | | SEE TABLE | | |
| SCALE | 5:1 | UNIT | mm | DIAGRAM METHOD | PART NAME BFMN | |
| | | | | THIRD ANGLE PROJECTION | | |
| DRAWING DATE | 27/JUL/2016 | DRAWING NAME | G1202-0-3 | 3D CAD DATA | PART NO. SEE TABLE | |
| Pacific Engineering Corporation | | | | | SHEET | SIZE |
| | | | | | 1 / 2 | A3 |



FOR EU:
THE DECIMAL SEPARATOR IS FULL STOP, AND NOT A COMMA.
E.G. EU $\pi=3,14$ – JAPAN : $\pi=3.14$

| NO. | DATE | REVISION RECORDS | REVISED | REVISION NO. |
|-----|------|------------------|---------|--------------|
| | | | | |
| | | | | |
| | | | | |

包装仕様/PACKAGING SPECIFICATION

| | 内装/INNER PACKAGING | 外装/OUTER PACKAGING |
|------------------------------|---|--------------------------------|
| 包装材料 MATERIAL | PLASTIC BAG FOR BFMN (153×270) | CARDBOARD BOX (274×217×179) |
| 品番シール SEAL OF PART No. | — | 現品票/ID TAG |
| 表示 MARKING | | |
| 収容数 CAPACITY | 1,000pcs | 10,000pcs |
| 包装方法 METHOD | <p>1. BFMNの包装用ビニール袋に、製品1,000ヶを入れ、自動包装機にて閉じる。</p> <p>2. 段ボール箱にビニール袋を横に2列並べ、それを5段積んで計10袋入れる。</p> <p>3. 段ボールのフタをPPテープで止め、ダンボールの側面(現品票貼り付け位置)に現品票を貼る。</p> <p>1. PUT 1000 pcs. OF BFMN INTO THE PLASTIC BAG AND SEAL THE BAG BY AUTOMATIC PACKING MACHINE.</p> <p>2. ARRANGE THE PLASTIC BAG, WHICH CONTAINS 1000 pcs. OF BFMN, IN TWO LINES INTO A CARDBOARD BOX AND PILE UP THEM BY FIVE LAYERS. AND PACK 10 BAGS IN ALL INTO THE BOX.</p> <p>3. SEAL THE CARDBOARD BOX WITH PP TAPE AND PUT THE ID TAG ON THE SIDE OF THE BOX (PRESCRIBED PLACE).</p> | |

包装/PACKAGING INFORMATION

| NO. | PART NO. | PART NAME | Q'TY | MATERIAL | SIZE | REMARKS |
|--|---------------------|------------------------|-------------------|----------|-------|---------|
| APPROVED | <i>mang-ka</i> | DIMENSION TOLERANCE | ANGULAR TOLERANCE | FINISH | | |
| CHECKED | <i>mlr</i> | — | — | — | | |
| DESIGNED | <i>Daiji Honda</i> | RUST PREVENTION | MATERIAL | | | |
| DRAWN | <i>M. Saumasaki</i> | — | — | | | |
| SCALE | UNIT | DIAGRAM METHOD | PART NAME | | | |
| 5:1 | mm | THIRD ANGLE PROJECTION | BFMN | | | |
| DRAWING DATE | DRAWING NAME | 3D CAD DATA | PART NO. | | | |
| 27/JUL/2016 | G1202-0-3 | — | SEE TABLE | | | |
| Pacific Engineering Corporation | | | | | SHEET | SIZE |
| | | | | | 2 / 2 | A3 |